

Heartland Environmental Design

Environmental Planning & Design
Landscape Architecture
Urban Design



Phone: 613-849-5543

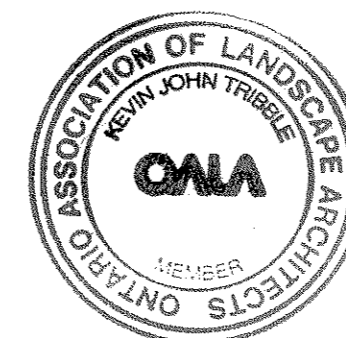
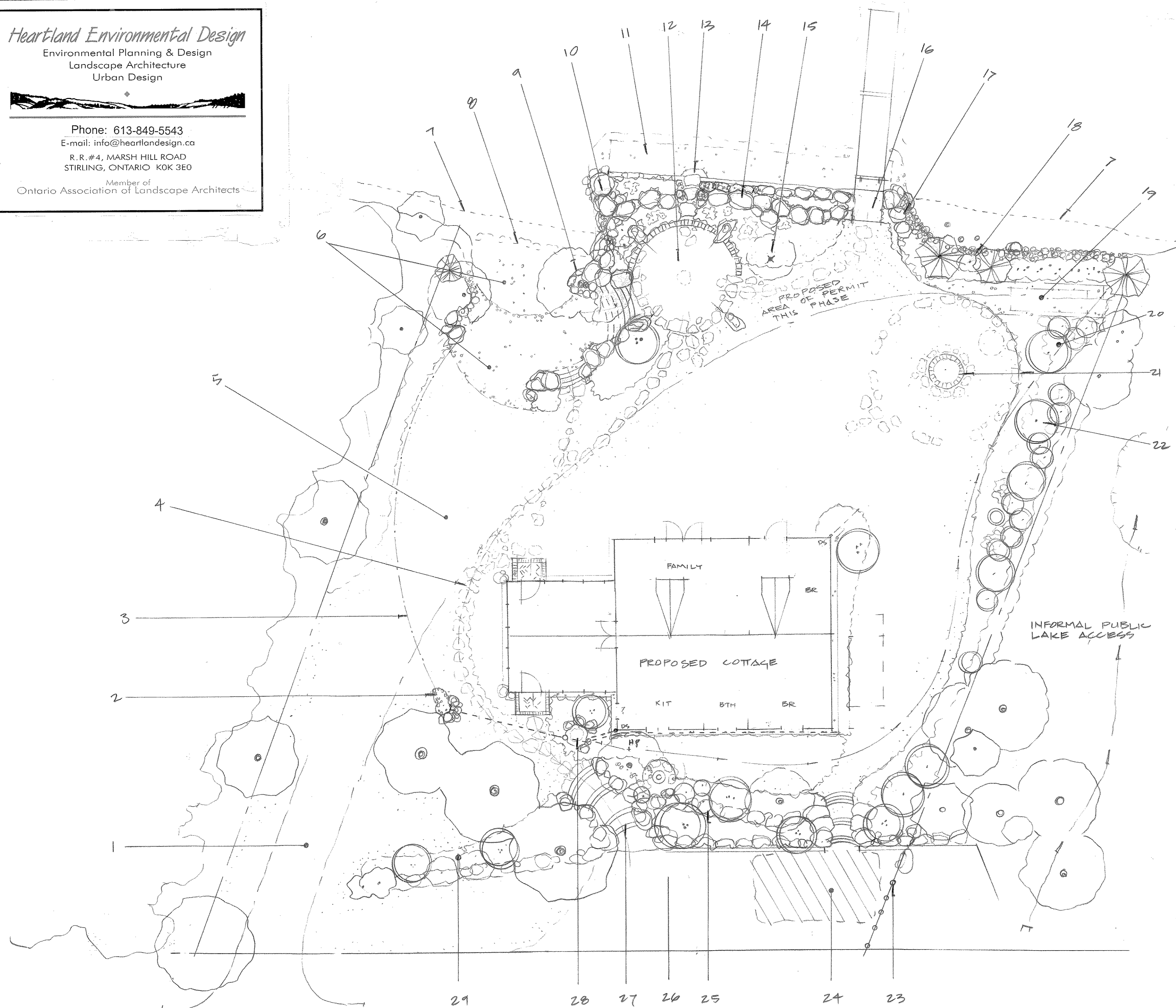
E-mail: info@heartlanddesign.ca

R. R. #4, MARSH HILL ROAD
STIRLING, ONTARIO K0K 3E0

Member of
Ontario Association of Landscape Architects

KEY FEATURES OF THE PLAN

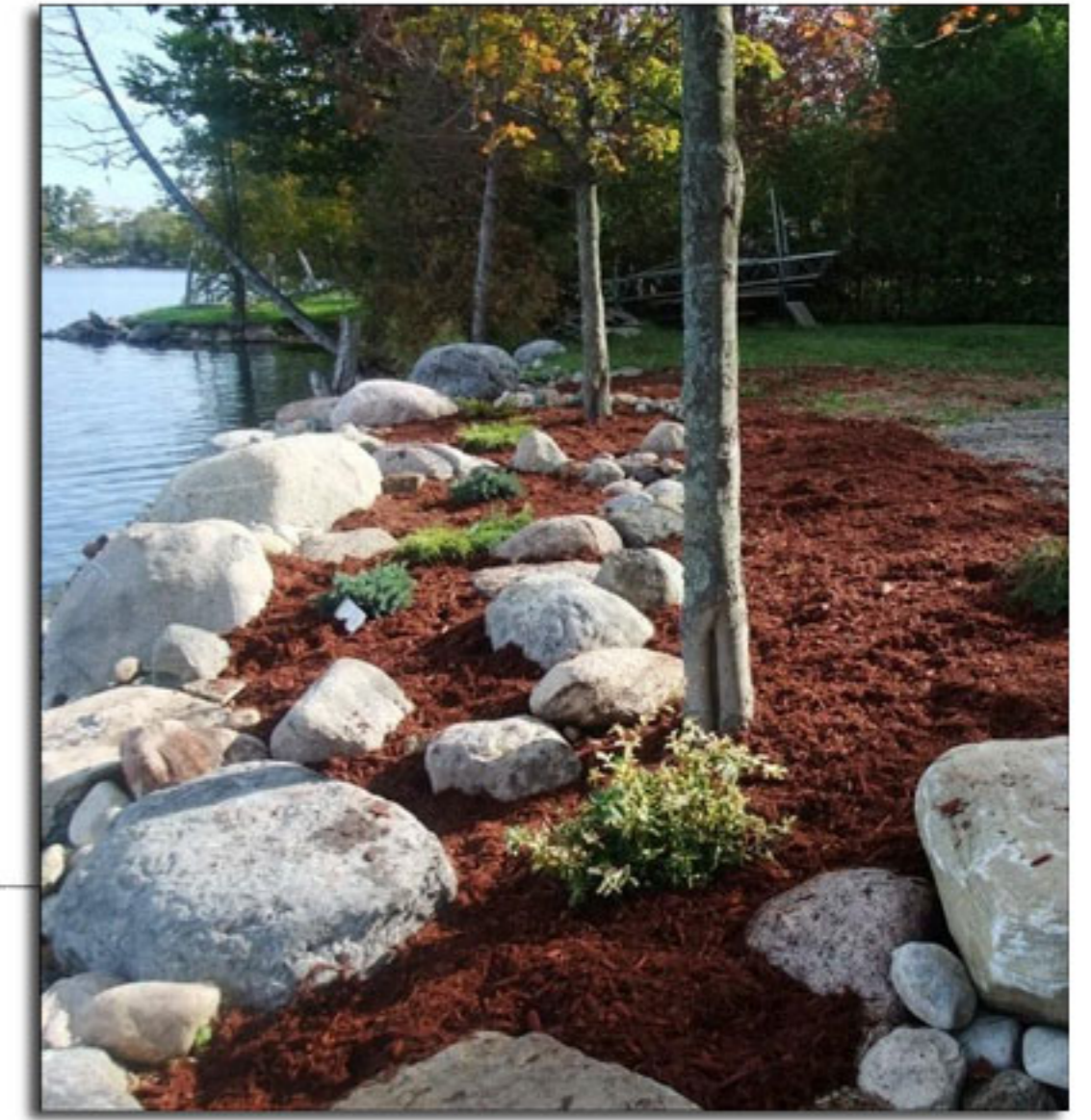
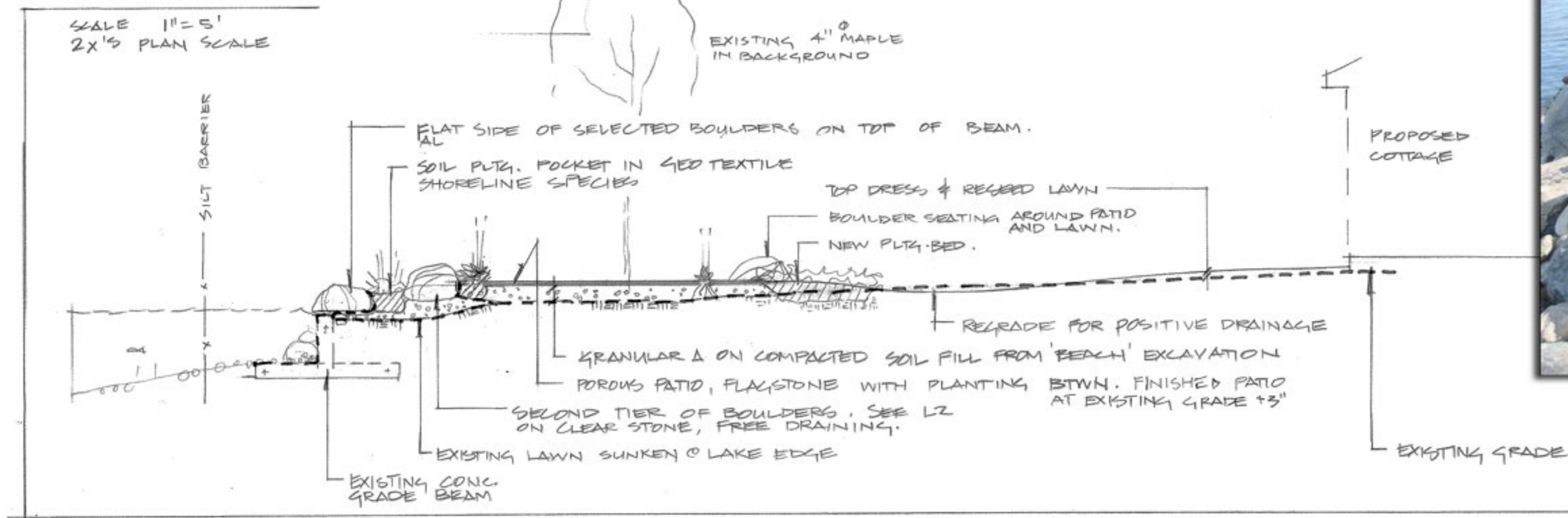
- 1 Existing gravel driveway to remain
- 2 Outfall for water feature, area drain
- 3 Drainage tile in gravel trench
- 4 Flagstone walk
- 5 Lawns top-dressed and over-seeded
- 6 Landward excavation for pea-stone beach and pea-stone lake bottom added
- 7 Original shoreline as per "R" plan survey
- 8 Existing line of submerged rock to remain
- 9 Small boulders and cobblestone ballast
- 10 Large and small boulder erosion barrier
- 11 Clear stone cover over existing concrete
- 12 Planted flagstone patio
- 13 Flat rock steps over existing concrete wall
- 14 Boulder retaining wall on top of existing
- 15 Removal of inappropriate tree
- 16 New poured concrete dock abutment
- 17 Large and small boulder erosion barrier
- 18 Geo-textile and cobblestone erosion barrier
- 19 Granular storage area for dock
- 20 Planted buffer using native stock
- 21 Existing fire pit re-built
- 22 Ring of flagstones in grass
- 23 Posts to define property line
- 24 Existing sub-standard septic bed removal
- 25 Terraced and sloped planting beds
- 26 Existing gravel parking to remain
- 27 Stepped path connection to cottage/parking
- 28 Small pond for downspout. Overflow to lower drain pipe
- 29 Privacy planting to augment existing



Muir Residence		
SCALE: 1"=10'	APPROVED BY:	DRAWN BY: KT
DATE: 7/05/08		REVISED:
CONCEPTUAL SITE PLAN		
#148 OAK LAKE RD Q.W. ON.		DRAWING NUMBER: 1/2

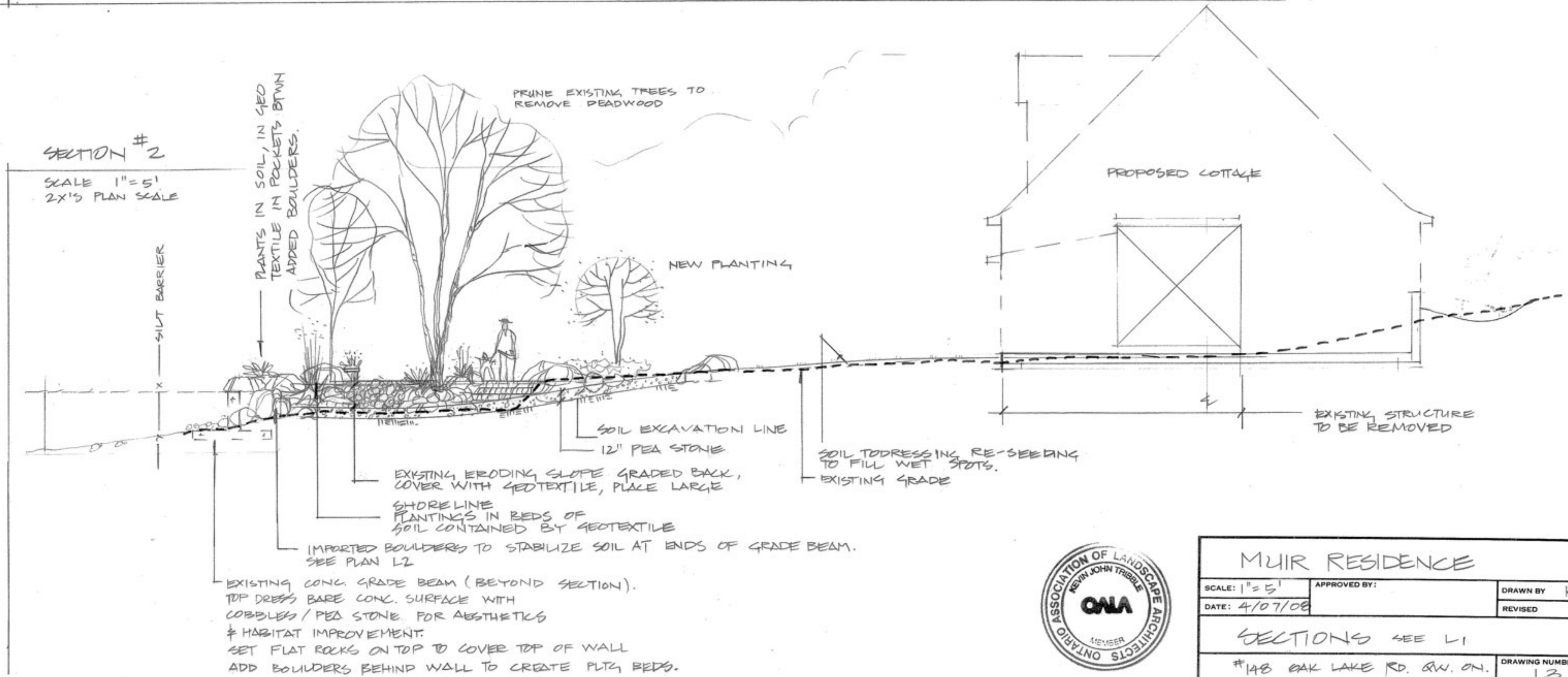
SECTION # 1

SCALE 1" = 5'
2X'S PLAN SCALE



SECTION # 2

SCALE 1" = 5'
2X'S PLAN SCALE



MUIR RESIDENCE		
SCALE: 1" = 5'	APPROVED BY:	DRAWN BY: KT
DATE: 4/07/08		REVISED:
SECTIONS SEE L1		
#148 OAK LAKE RD. Q.W. ON.		DRAWING NUMBER: L3