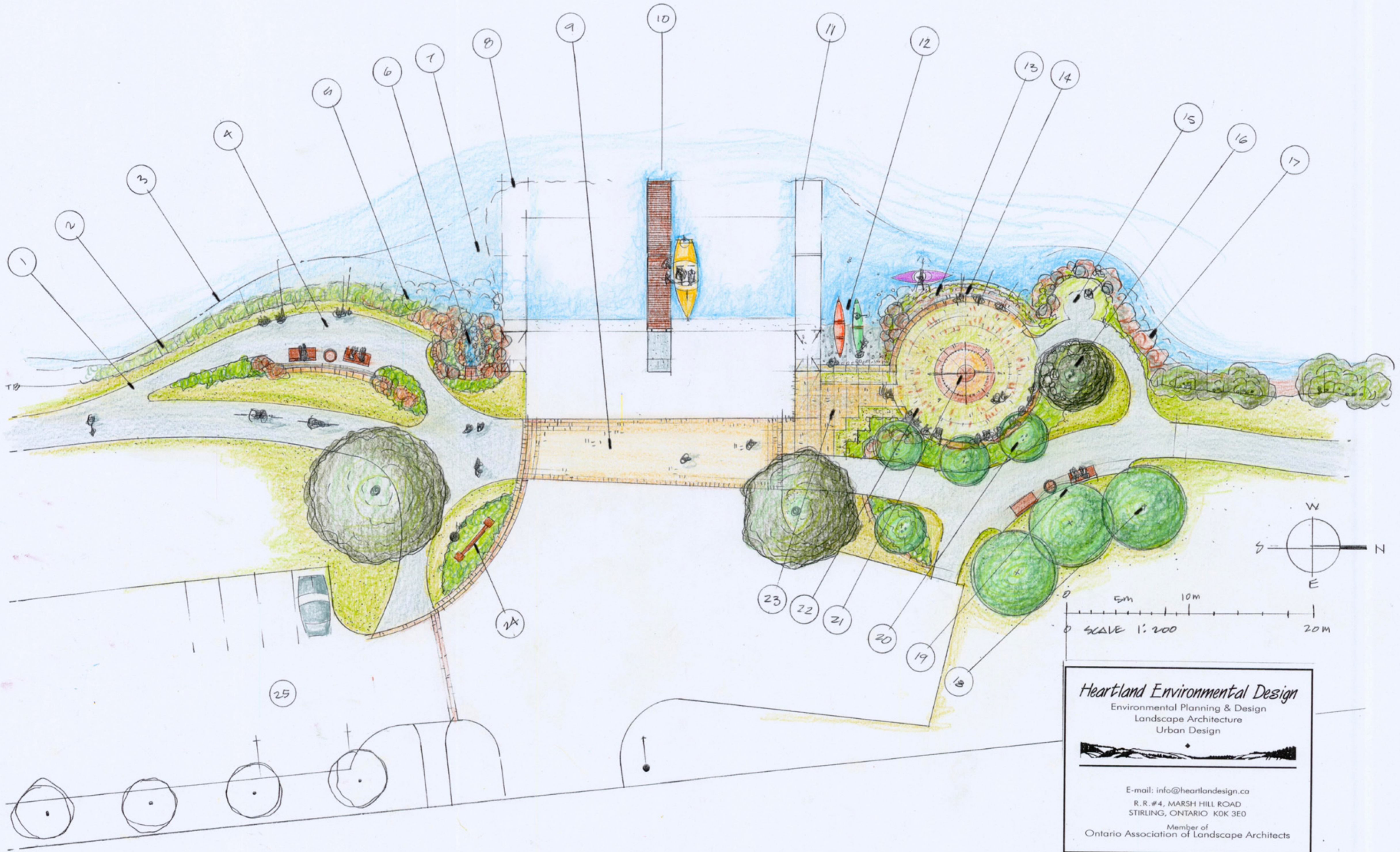


TRENT RIVER AND CANAL

← FLOW



Heartland Environmental Design
 Environmental Planning & Design
 Landscape Architecture
 Urban Design

E-mail: info@heartlandesign.ca
 R. R. #4, MARSH HILL ROAD
 STIRLING, ONTARIO K0K 3E0
 Member of
 Ontario Association of Landscape Architects

PREPARED FOR THE CITY OF QUINTE WEST		
SCALE: 1:200 M	APPROVED BY:	DRAWN BY: KT
DATE: 24/03/08		REVISED:
KIWANIS PARK - PHASE III		DRAWING NUMBER
LANDSCAPE CONCEPT		QW-KP-03/1